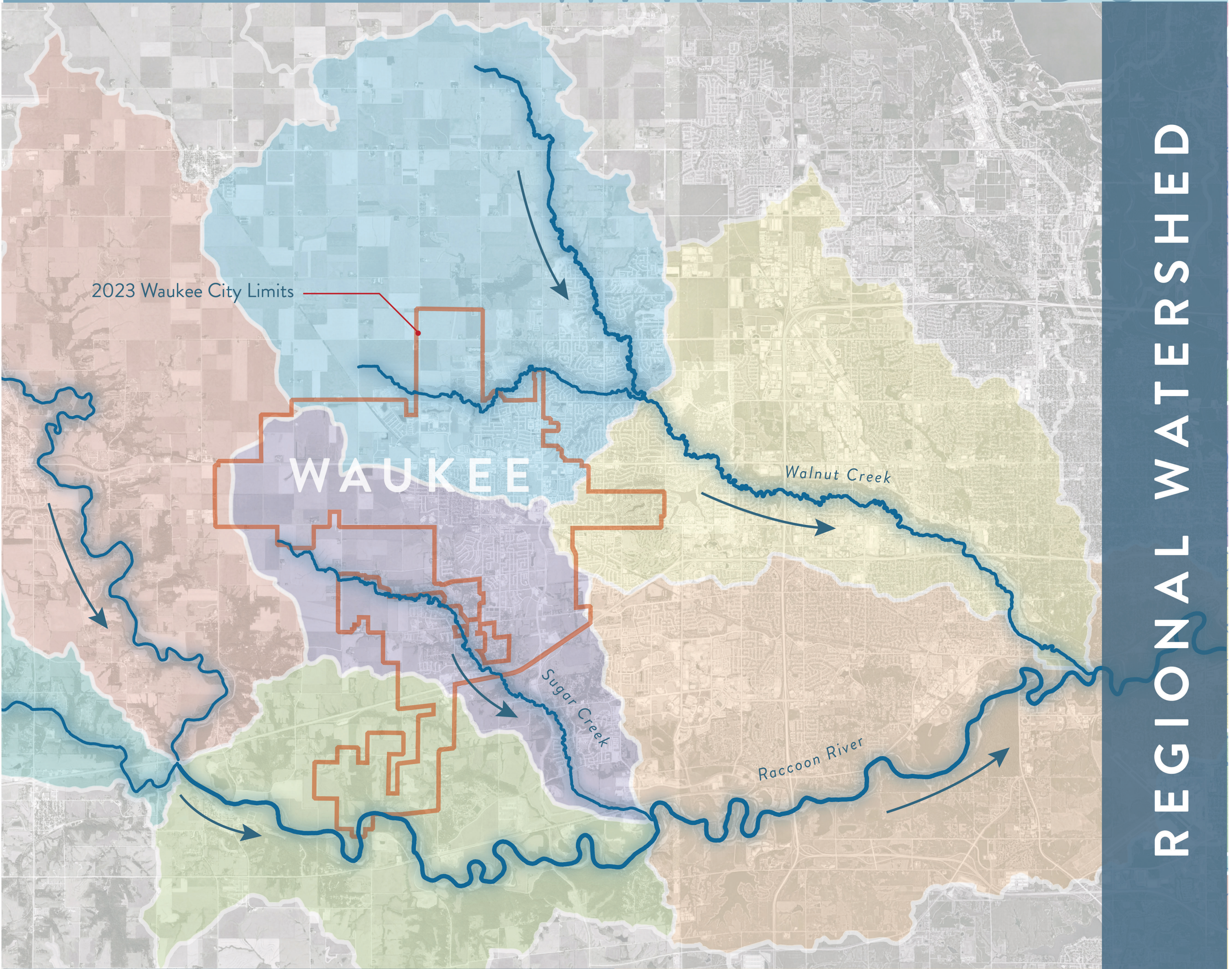


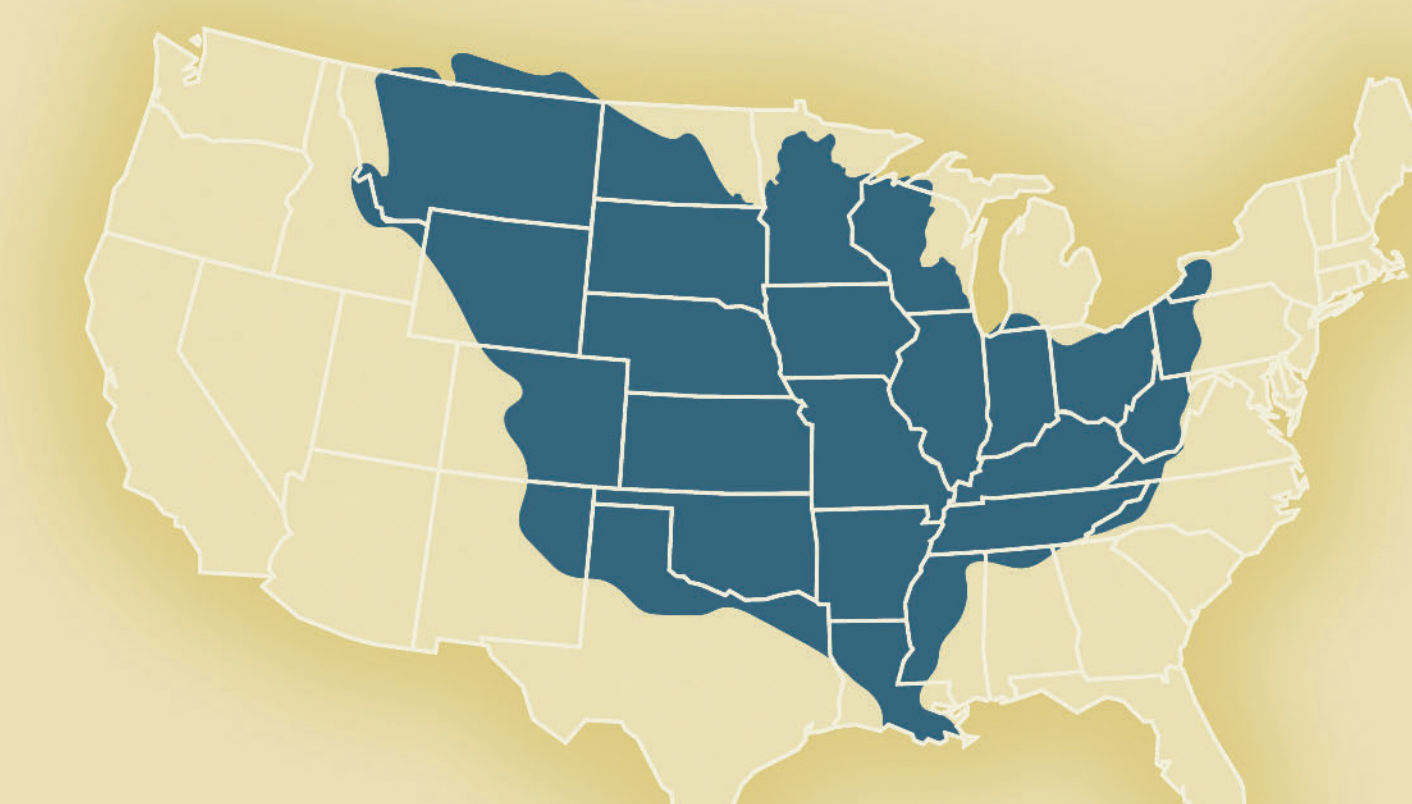
# SAVING OUR WATER WATERSHEDS



REGIONAL WATERSHED

## WHAT IS A WATERSHED?

Wherever you are, you're in a watershed. A watershed is an area of land that drains or "sheds" water into a specific waterbody. A waterbody is any river, lake, stream, ocean, pond or basin which receives runoff waters from a watershed. The watersheds surrounding and the sub-watersheds within the City of Waukee all make their way to the Raccoon River which then drains into the Des Moines River which drains into the Mississippi River.



Mississippi River Watershed

Watersheds can be small or large, and most are connected, eventually draining to the ultimate waterbodies - the bays, gulfs or oceans. Two-thirds of the United States lies within the Mississippi River watershed with all its tributary rivers and streams that eventually drain into the Gulf of Mexico.

LOCAL WATERSHED

