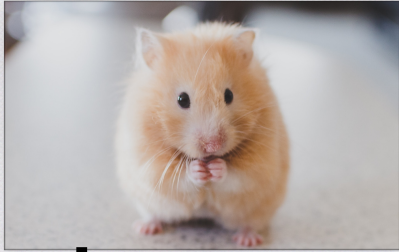
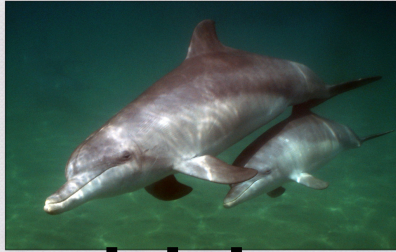


BABY ANIMAL MATCH GAME

A lot of baby animals are called either **PUPS** or **CALVES**.
Can you guess which is which?



hamster



dolphin



buffalo



bat



shark



walrus



seal



cow



elephant



dog



whale



giraffe

Calf: buffalo, elephant, dolphin, cow, giraffe, whale
Pup: hamster, walrus, dog, seal, bat, shark